



<b>TENTATIVE SECOND COMMITTEE DATE</b>	<i>Approximately 10 working days after 1<sup>st</sup> selection meeting (Selected firm will be notified)</i>
<b>PRE-DESIGN CONFERENCE</b>	<i>January 6, 1998</i>
<b>DEADLINE FOR CONSULTANT FEE PROPOSAL</b>	<i>February 3, 1998</i>

**EVALUATION FACTORS**

1. *Relative experience of consultant personnel assigned to project team with highway projects for KTC and/or for federal, local or other state governmental agencies. (10 points)*
2. *Capacity to comply with project schedule. (10 points)*
3. *Past record of performance on project of similar type and complexity. (10 points)*
4. *Project approach and proposed procedures to accomplish the services for the project. (10 points)*
5. *Location of offices where work is to be performed. (2 points)*

**SELECTION COMMITTEE MEMBERS**

1. *Jon Staggs, State Auditor's Office*
2. *Doyle Hicks, User Division*
3. *Gary Sharpe, User Division*
4. *Andre Johannes, Secretary's Pool*
5. *Andy Buell, Secretary's Pool*
6. *Jasper Sullivan, Governor's Pool*

**DBE REQUIREMENT***None*

*SPECIAL INSTRUCTIONS*

*One consultant will be selected for both projects.*

*The Department reserves the right to modify the selected consultant's agreement to include any necessary engineering and/or related services for this project. At that time, the firm (s) or subconsultant will be prequalified in the areas required.*

*SCOPE*

*The selected consultant shall provide engineering services for the preparation of an Advanced Situation Folder(s) for the appropriate applicable structures. Prequalification in the area of structure design is required to be identified in the consultant Response to Announcement.*

*AVAILABLE KTC STUDIES*

*None*

*PROJECT LENGTH*

*A. 0.16 KM  
B. 0.16 KM*

*METHOD OF DESIGN*

*X Metric Units  
X CADD Capability(with DGN Design File Format) \_  
CADD Based Automated Highway Design System  
X Digital Terrain Modeling*

*ENVIRONMENTAL*

*Environmental Services will be provided by the Department.*

*PHOTOGRAMMETRIC SERVICES*

*The Cabinet will be responsible for aerial photography and will furnish manuscripts on computer discs in .DGN format.*

*STRUCTURE DESIGN*

*The selected consultant shall do the necessary engineering services and submit to Kentucky Transportation Cabinet, an Advanced Situation Folder(s) for all structures.  
Prequalification in the area of structure design is required to be identified in the consultant Response to Announcement.*

*GEOTECHNICAL SERVICES*

*All geotechnical work is to be provided by the Department.*

*PROJECT FUNDING*

*Federal*

**TRAFFIC**

*The Department will provide traffic volumes and projections.*

**PROJECT SCHEDULE MILESTONES**

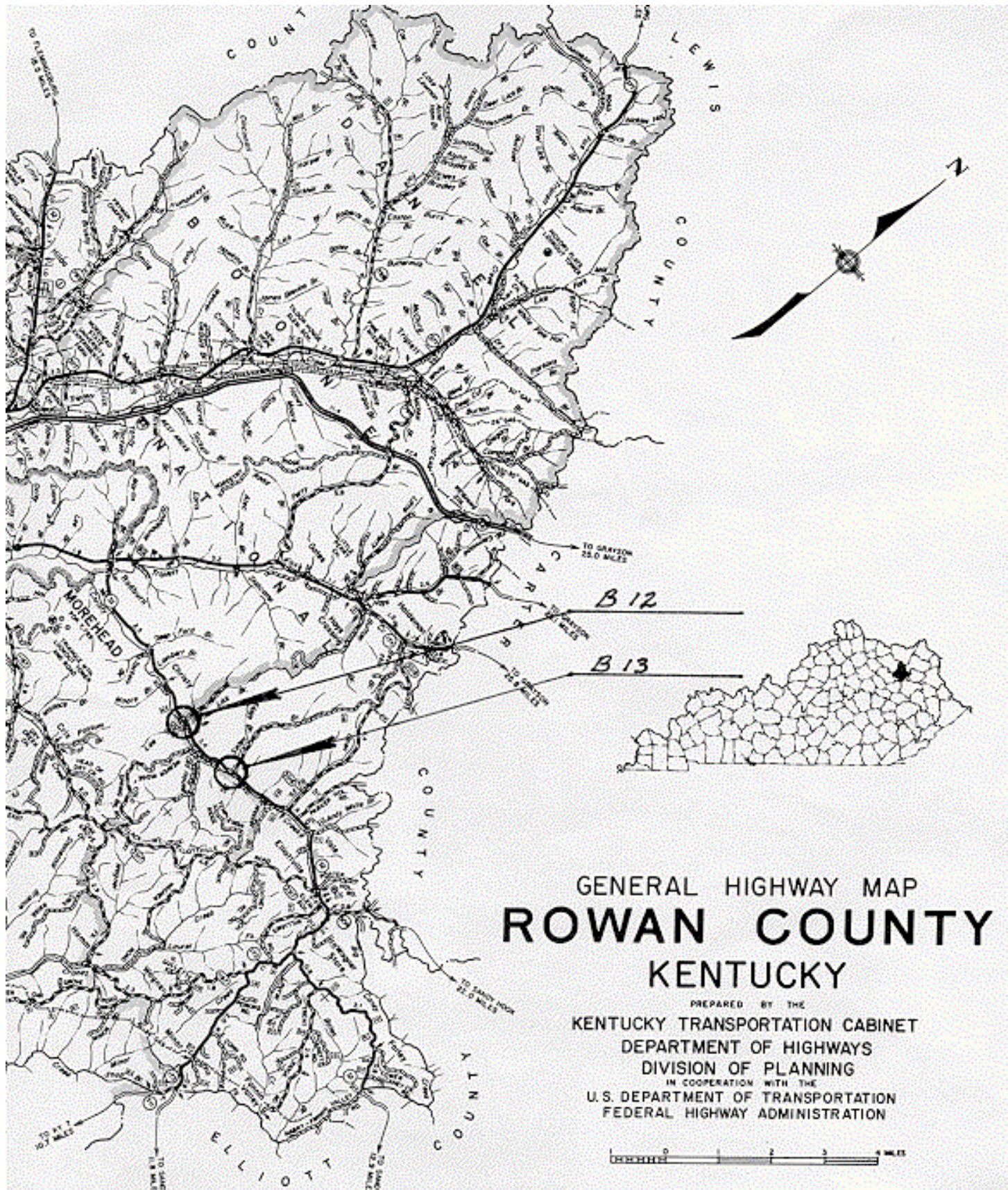
<b>PRELIMINARY LINE AND GRADE</b>	<i>May 1, 1998</i>
<b>FINAL PLAN IN HAND INSPECTION</b>	<i>October 1, 1998</i>
<b>ADVANCE SITUATION FOLDER:</b>	<i>November 1, 1998</i>
<b>RIGHT OF WAY PLANS</b>	<i>January 1, 1999</i>
<b>RIGHT OF WAY PLANS FOR UTILITIES</b>	<i>January 1, 1999</i>
<b>FINAL ROADWAY PLANS</b>	<i>October 1, 1999</i>

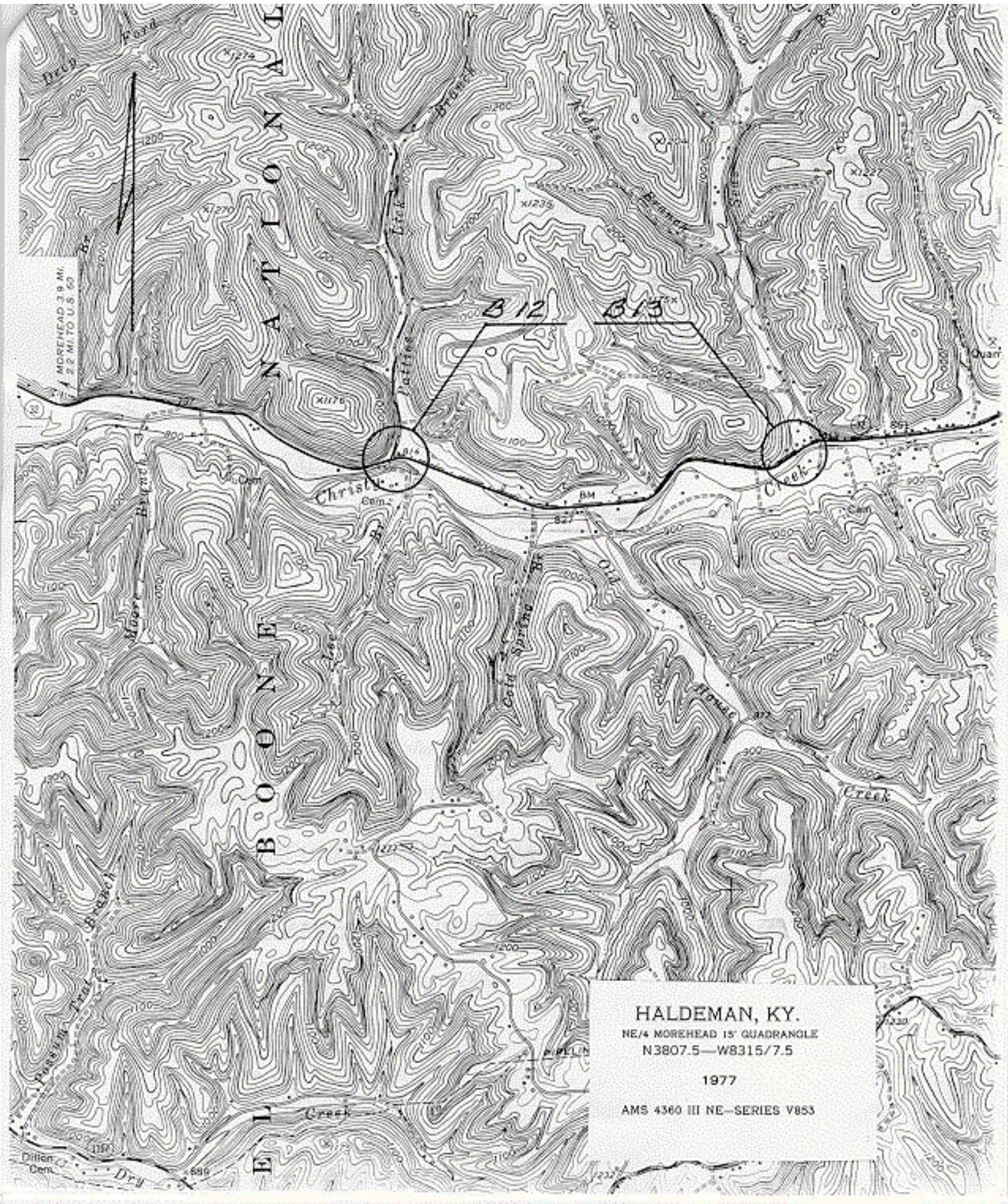
**PREQUALIFICATION REQUIREMENTS**

*The project team shall be prequalified in all areas as follows:*

<b><u>ROADWAY DESIGN</u></b>
<i>Rural Roadway Design &gt; \$250,000</i>
<i>Surveying</i>
<b><u>STRUCTURE DESIGN</u></b>
<i>Spans under 500'</i>
<i>Culvert Design</i>

**LOCATION MAP**





[Go to next project](#)